

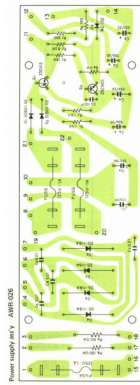


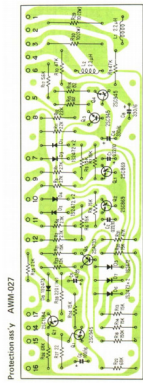
STEREO AMPLIFIER

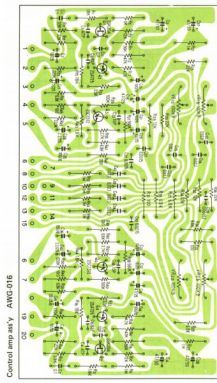
SA-7100

PMW KCM KCM

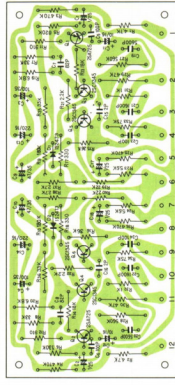
3

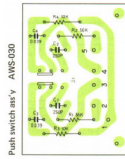


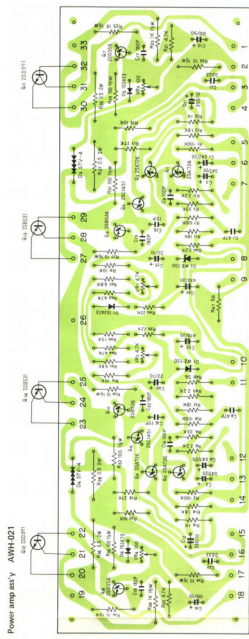




Equalizer imp assy AWF-005

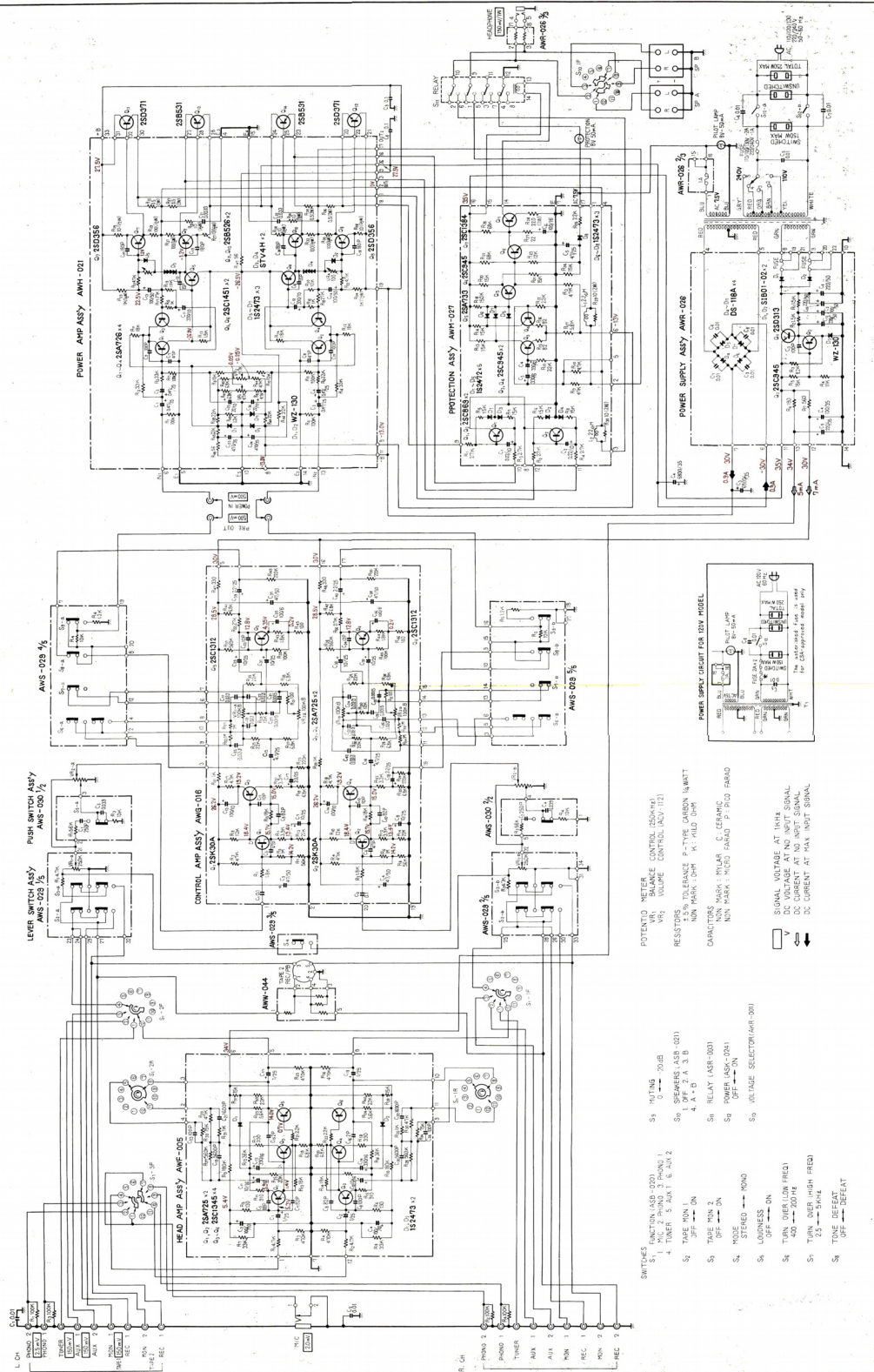








SA-7100



LEVER SWITCH ASSY
ANS-028 1/2

PUSH SWITCH ASSY
ANS-028 1/2

ANS-029 1/2

ANS-029 3/4

ANS-029 1/2

ANS-029 1/2

ANS-029 1/2

ANS-029 1/2

ANS-029 1/2

POTENTIOMETER
ANS-029 1/2

RESISTORS
ANS-029 1/2

CAPACITORS
ANS-029 1/2

POWER SUPPLY CIRCUIT FOR 6V6 MODEL

SWITCHES FUNCTION (ASR-020)

S₁ 1. MIC. 2. PHONO 3. PHONO 1
 4. TONE 5. AUX 1 6. AUX 2
 S₂ TAPE MON ON
 S₃ MUTE ON ON
 S₄ MUTE OFF OFF
 S₅ NOISE STEREO MONO
 S₆ LOUDNESS OFF ON
 S₇ TURN OVER (LOW FREQ) 400 --- 200 Hz
 S₈ TURN OVER (HIGH FREQ) 100 --- 50 Hz
 S₉ ONE --- REPEAT

S₁ 100K
 S₂ 0 --- 20dB
 S₃ SPEAKERS (ASR-021) 1, 4, 5, 6
 S₄ RELAY (ASR-100)
 S₅ POWER (ASR-024)
 S₆ VOLUME SELECTOR (ASR-001)

SIGNAL VOLTAGE AT MARK
 DC VOLTAGE AT NO INPUT SIGNAL
 DC CURRENT AT NO INPUT SIGNAL
 DC CURRENT AT MAX. INPUT SIGNAL

V
 ← →
 ← →